

ESTRIELA

by



📞 | +91 915835 70 79

@ | enquiry@aashvikgroup.com

🌐 | www.aashvikgroup.com

Architects & Planners



Disclaimer : Images shown are only indicative and representational in nature and are only for the purpose of illustrating a possible layout.



Nachinola-Goa

Living Under the Starry Nights



Goa

Whats not to like about

A land seeped in history, a land that can trace its origins back to Warrior Sage Parshuram, a land that was soaked in varied hues of Portuguese culture for almost 500 years, a land that was rediscovered by the hippies in the 1960s and a land that now is synonymous with good times.

Number one on everyone's travel list and more importantly a destination that tugs at everyone's heart in a way that they want to own a piece of it.

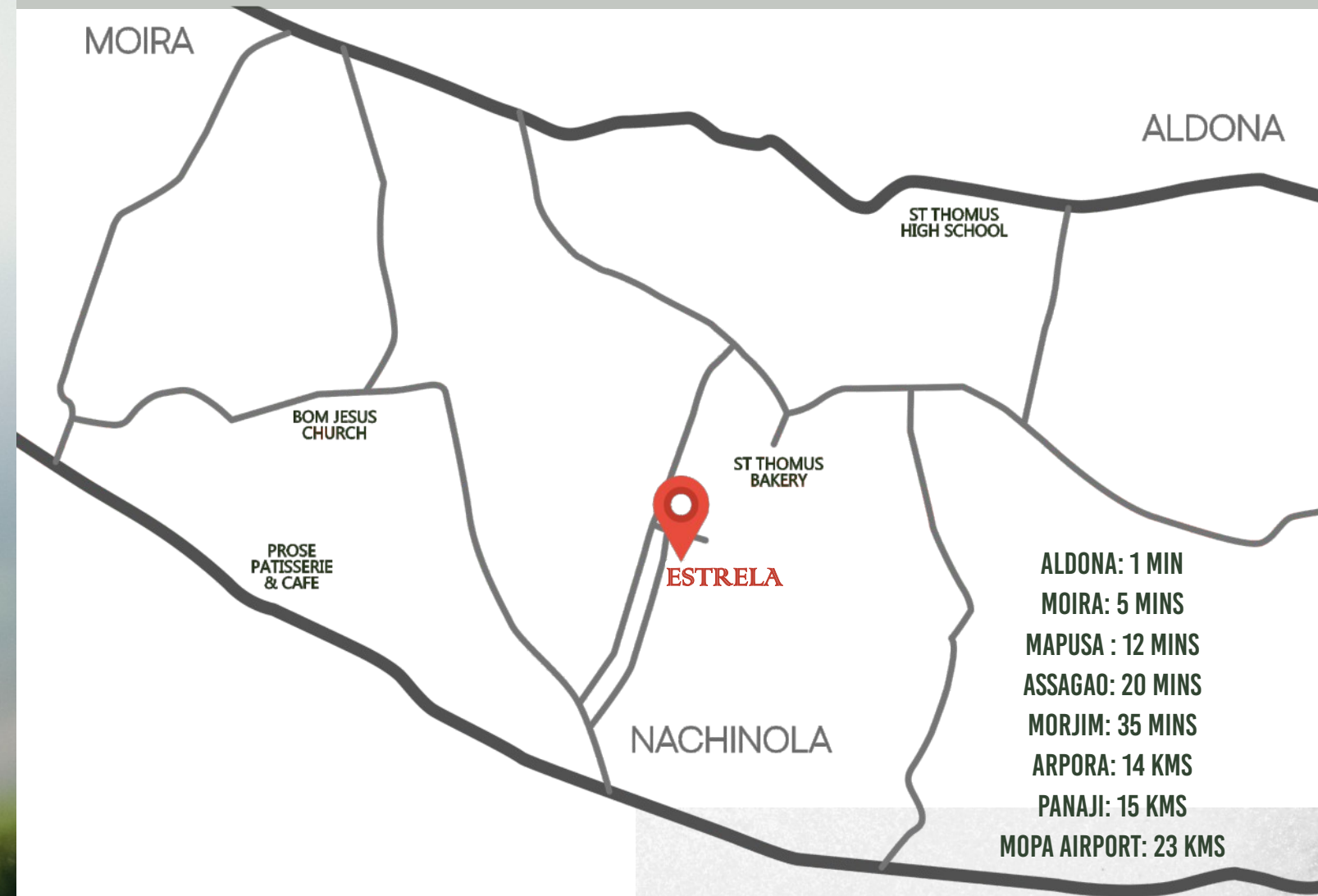
Goa is not just a place it's an emotion - **come discover your slice of paradise.**

Nachinola


Nestled in a scenic town of North Goa, Nachinola is a quaint village that is well known for its mythological and archaeological legacy.

With glimpses of bygone times in every corner, the old world charm of this village will allow you to experience the finest of Portuguese history.

Surrounded by picturesque landscapes and expansive fields and open areas, Its peaceful environment and surrounding villages of Moira and Aldona make it a perfect getaway from the hustle and bustle of city life.



Nestled away in the quaint and scenic backwaters of Nachinola, this property is located roughly 15 minutes from the beautiful and dreamy beaches of North Goa and is driving distance from several fine culinary and establishments.



Estrela has been taken from Old Galician-Portuguese language meaning ‘**Star**’. Britannica defines a star as any massive self luminous celestial body that shines by radiation generated from its internal energy source : something that we at Aashvik are aspiring to do with our first endeavour.

And we couldn't think of a better name for a place from where you can gaze in a wonder at the shiny night sky in all its glory - a rare luxury for anyone coming from the city life.

REVATI

Revati has been designed to create interconnected spaces across its three levels. The villa opens to a private garden with bar and alfresco dining on one side and a pool with deck area and outdoor shower on the other side.

The seamless integration of living-dining layout with magnificent double height ceiling and expansive glass opening area posing as a perfect backdrop for leisure.

This villa of 3 bedrooms, has en-suite bathrooms, balconies, terraces and an elevator for easy access at different floors. A large den on the first floor for casual entertaining overlooks the double height ceiling of the living dining area. The lush master suite on the second floor is a crowning glory of the villa with double vanity wash room, personal lounge facing the valley view. Terrace area is a personal heaven detached from the world below with a private Jacuzzi and terrace bar.





Enjoy post-card perfect views from the various seating areas in the villa, framed by the high ceiling in the living room, which folds open to an eye-level view of the swimming pool. Cook up a storm in the fully equipped kitchen or order-in from the many trendy restaurants in the area and enjoy an al fresco meal on the cosy terrace.



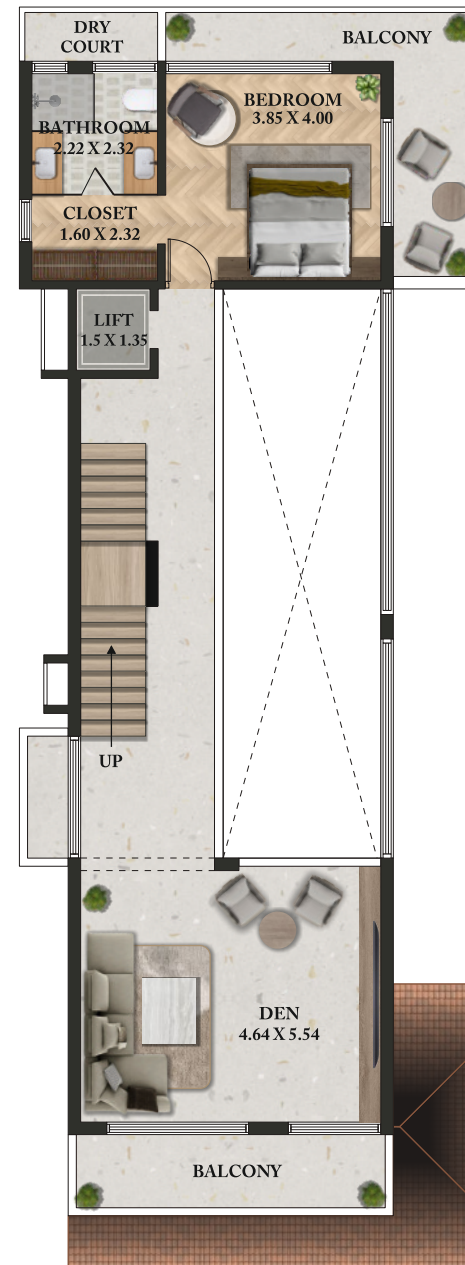


Hints of Mediterranean and Portuguese design styles are visible through the Ensuite bedrooms that exudes class and opulence at the same time.

*Enjoy an atmosphere
that ignites a sense
of calm and joy.*



GROUND FLOOR PLAN



FIRST FLOOR PLAN



SECOND FLOOR PLAN



FELIS

Felis features ground plus one floor villa which opens onto a private pool and deck. The multilevel living - dining layout is an immaculate integration of double height ceiling and expansive glass opening area posing as a perfect backdrop for leisure.

This villa has 3 bedrooms with en suite bathroom, powder room, balconies on each floor. Each of the 3 bedrooms area designed to awe, with neutral colour palette, cozy furniture and walk in closets.

A family room on the first floor for casual entertaining overlooks the double height ceiling of the dining area. The master suite on the first floor is exclusively designed with double vanity wash room and personal lounge facing the scenic valley view.

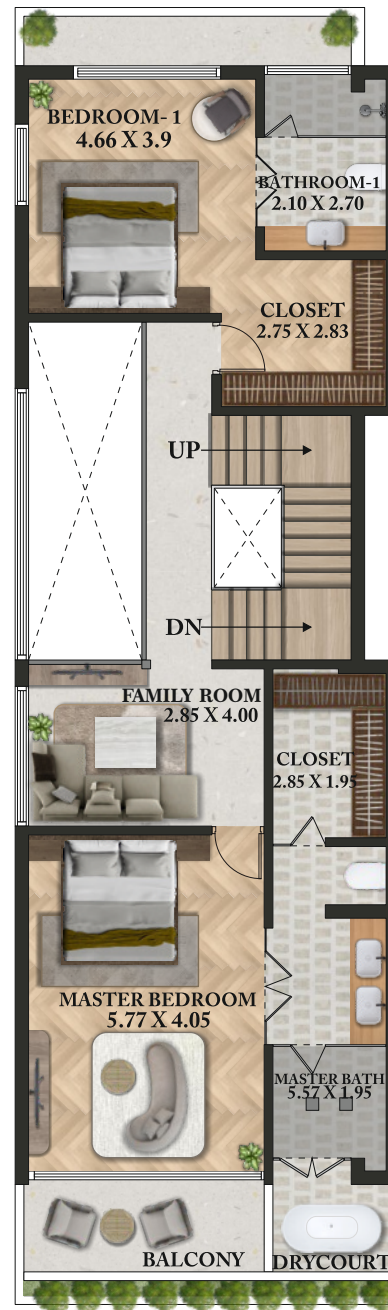
The terrace area is a personal cocoon detached from the world below with a private Jacuzzi and terrace bar.



VILLA FELIS



GROUND FLOOR PLAN



FIRST FLOOR PLAN

SITE PLAN





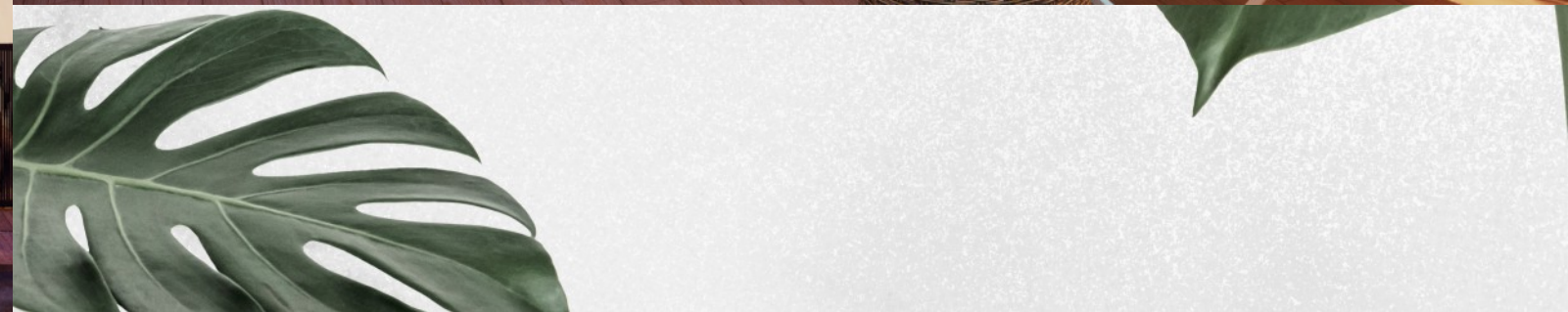
DENE B



Deneb features ground plus two floor villa that opens onto private expansive pool, equipped with a pool bar which is perfect for a quick leisure dip. The open plan layout allows the living, dining & kitchen spaces to flow into each other, while the double height ceiling & sweeping glass openings makes the space cohesive and unique.

This 4 bedrooms villa has an elevator for ease of movement, with ensuite bathroom, powder room & balconies on each floor. This villa is equipped with a large theatre for casual entertaining over and a gym on the first floor overlooking the double height of dining area.

The master suite on the second floor is a highlight of the villa with double vanity wash room and a bath tub facing the valley view. The outdoor terrace on the master suite is a personal space to detach from the world below with a private Jacuzzi and terrace bar overlooking the beautiful sunset.

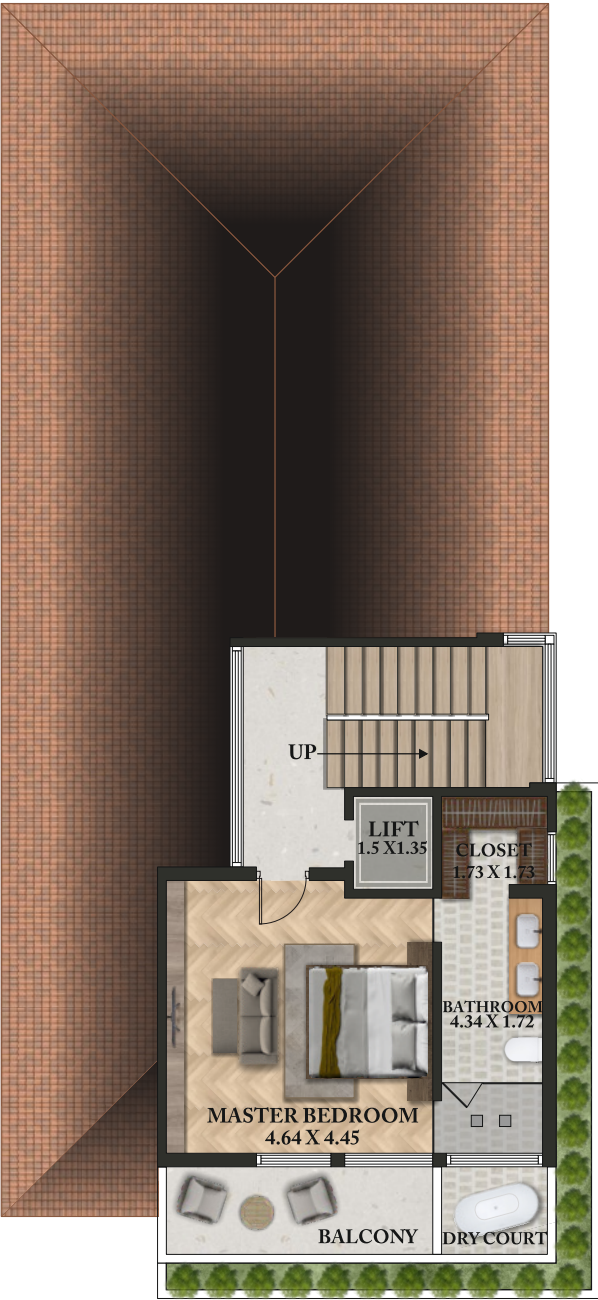




GROUND FLOOR PLAN



FIRST FLOOR PLAN



SECOND FLOOR PLAN



Disclaimer : Images shown are only indicative and representational in nature and are only for the purpose of illustrating a possible layout.



Picture perfect backdrop for Estrela where your villa is taking shape!